

Nintendo®

GAME BOY™

DMG-F1-USA

**FIRE**™

**INSTRUCTION BOOKLET**

*This official seal is your assurance that Nintendo has reviewed this product and that it has met our standards for excellence in workmanship, reliability and entertainment value. Always look for this seal when buying games and accessories to ensure complete compatibility with your Game Boy System.*



Thank you for selecting the Nintendo® GAME BOY® F-1 Race™ Game Pak.

Please read this instruction booklet thoroughly to ensure maximum enjoyment of your new game.

## CONTENTS

USING THE CONTROLS .....	3
HOW TO PLAY.....	4
HOW TO PLAY THE GRAND PRIX .....	5
HOW TO PLAY THE TIME TRIALS .....	7
HOW TO PLAY THE MULTI GAME .....	9
PLAYING AGAINST OTHER PEOPLE .....	11
TECHNIQUE .....	13

## Precautions

- 1) If you play for long periods of time, take a 10 to 15 minute break every hour or so.
- 2) This equipment is precision built. Do not use or store it under conditions of extreme temperature or subject it to rough handling or shock. Do not disassemble the unit.
- 3) Do not touch the connectors. Do not get them wet or dirty. Doing so may damage the Game Pak and/or GAME BOY unit.
- 4) Do not clean with benzene, paint thinner, alcohol or other such solvents.
- 5) Always check the Game Pak edge connector for foreign material before inserting the Game Pak into the GAME BOY unit.
- 6) Store the Game Pak in its protective sleeve when not in use.

©1990 Nintendo of America Inc.™ and ® Trademarks of Nintendo of America Inc.

## USING THE CONTROLS

### • BUTTON FUNCTIONS

#### • **+ Control Pad**

Use the left and right sides of the + Control Pad to steer your car to the right and left. When your speed exceeds MAX speed, press up on the + Control Pad to activate your nitro jets. The + Control Pad can also be used to select the game mode.

• **A Button** : Used to accelerate.

• **B Button** : Used to brake.

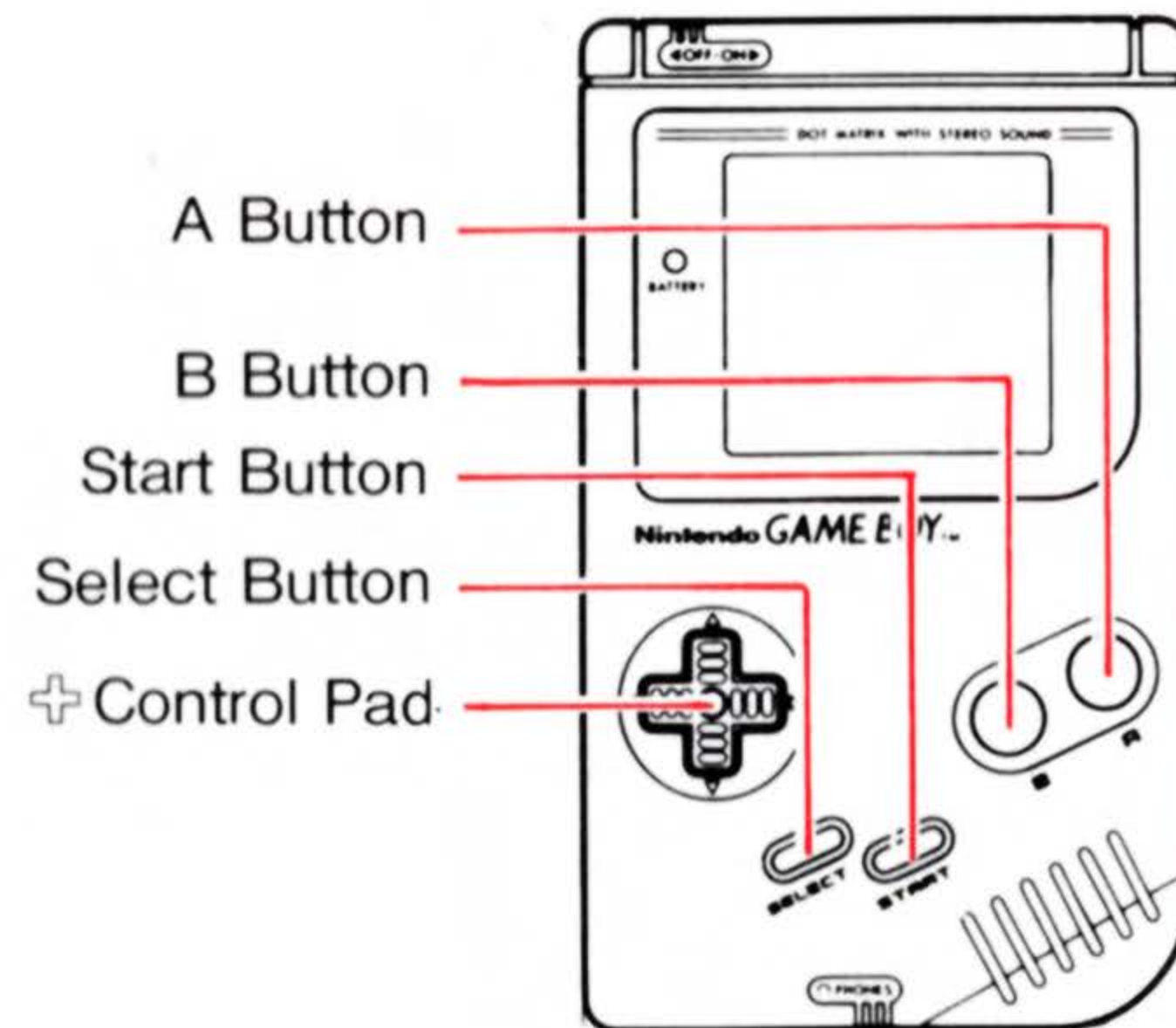
• **Start Button** : Press the Start Button to start the game. The Start Button also can be used to enter your choices on the option screens.  
If you wish to pause your game during game play, press the Start Button.

• **Select Button** : Can be used to select different choices on option screens.

If you wish to return to the title screen during game play, press the A, B, Select and Start Buttons at the same time. This function does not work in the MULTI GAME mode.

### • BATTERY BACKUP FUNCTION

F-1 Race is equipped with a battery backup that automatically saves your circuit, race results, and lap times. NOTE: MULTI GAME data cannot be saved.



## HOW TO PLAY

### ● Before beginning play

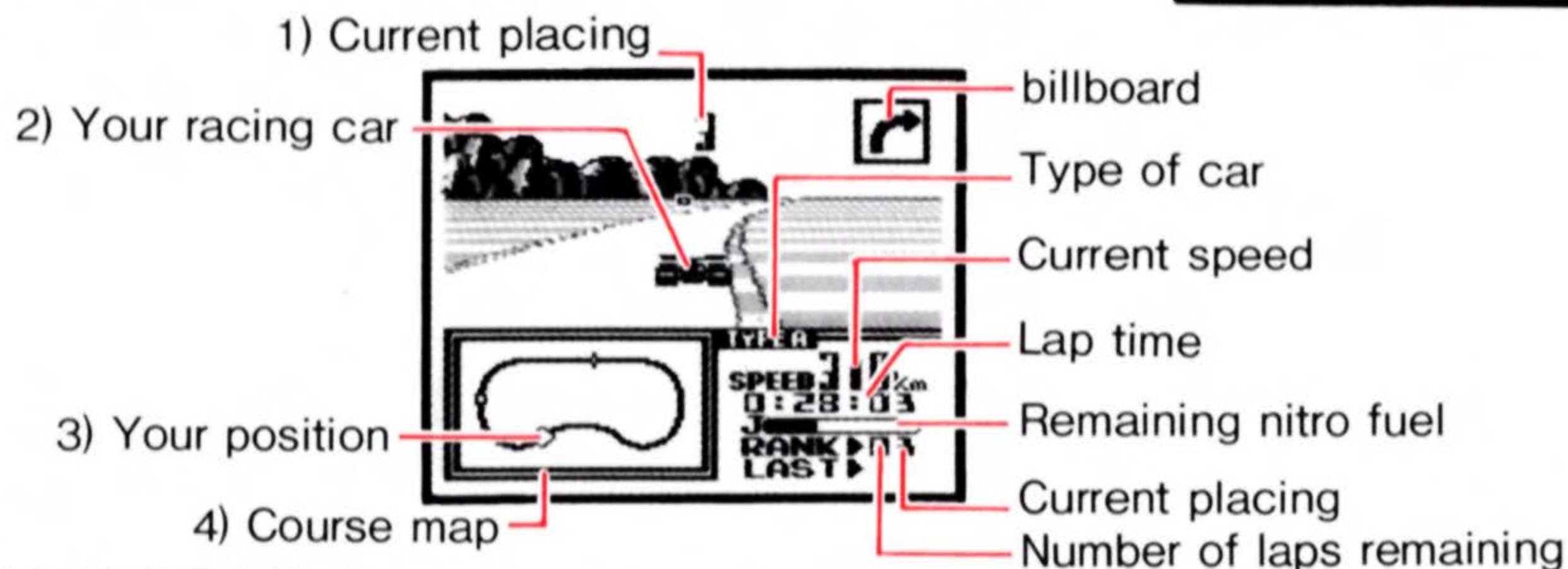
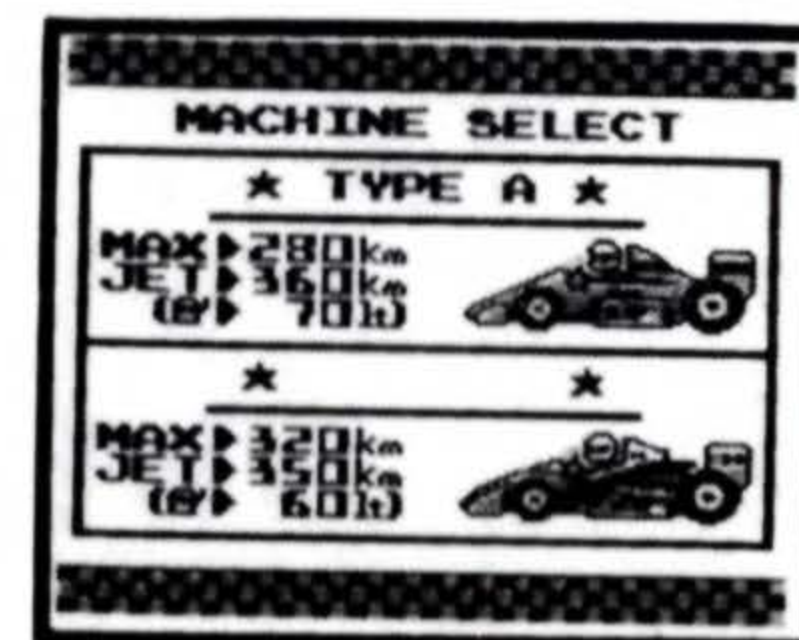
Correctly insert the F-1 Race Game Pak into your GAME BOY Compact Video Game System and turn the POWER switch On. "Nintendo" will appear on the screen and be followed by the title screen.

### ● TITLE SCREEN

On the title screen, you can choose between GRAND PRIX, TIME TRIALS, or MULTI GAME by using the Select Button or the + Control Pad. Press the Start Button after making your selection.

### ● RACING CAR SELECTION SCREEN

You can choose from TYPE A and TYPE B. MAX is the maximum speed. JET is the maximum speed when using the nitro jets. Is how many liters of nitro fuel can be carried. The numbers differ from course to course.



NOTE: When the word "SPEED" flickers, you can activate your nitro jets by pressing up on the + Control Pad.

## GRAND PRIX

In the GRAND PRIX, you can race around the world on nine different race tracks. On each race, you must pass ten competitors and take the checkered flag to proceed to the next course.

### (1) Mode Screen

Select CONTINUE or NEW GAME.

CONTINUE starts you on the track where you had left off before. This function loads information from the battery backed memory.

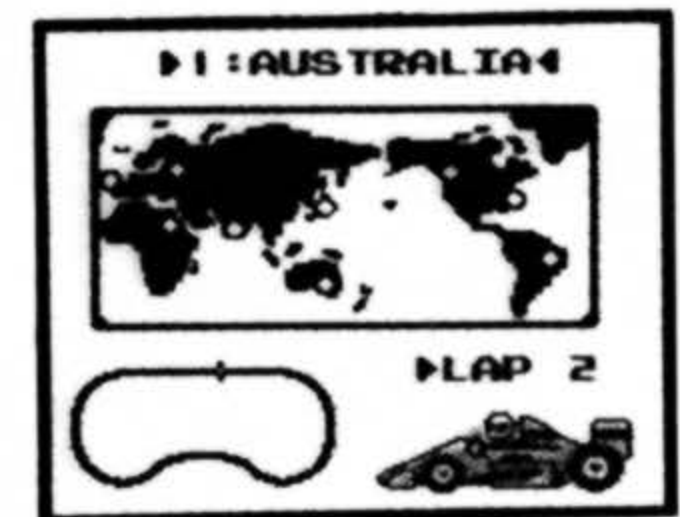
NEW GAME starts you in the first race.

NOTE: If you choose NEW GAME, the battery backed memory will be reset to the first race.



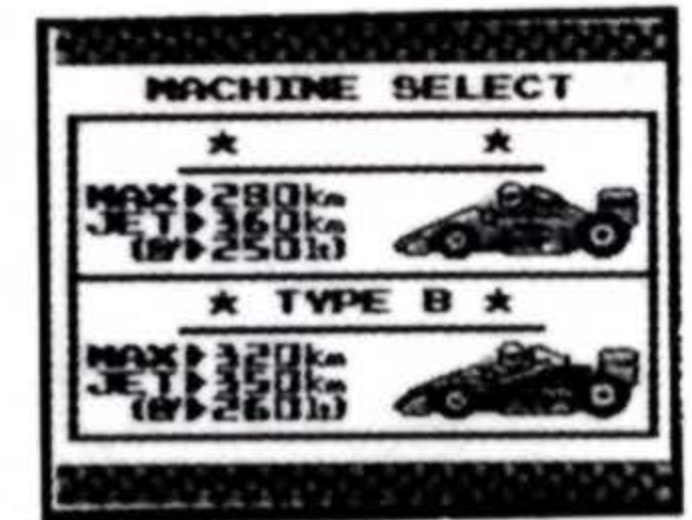
### (2) Track Layout Screen

Lets you check out the track on which you are about to race.



### (3) Car Selection Screen

Pick your car using up and down on the  $\oplus$  Control Pad.  
Press Start to race!



### (4) Game Screen

The race begins!

You will start in 10th place in all races. All races are two laps long.



### ● Race Results

On the Track Layout Screen, you can see the Race Results by pressing the Select Button.

GRAND PRIX RESULT			
COURSE 1 0:39:22	TRY	1	1
COURSE 2 1:11:33	TRIES	4	2
COURSE 3 1:09:24	TRIES	8	3
COURSE 4 1:18:01	TRIES	X	4
COURSE 5 :	TRY		

1) Course number

2) Fastest lap

3) Number of attempts  
(after ten attempts an "x" will appear)

4) The face will look different depending on the number of attempts.

## TIME TRIALS

This mode is good for practicing and learning the different tracks. The best lap time wins!

### (1) MODE SCREEN

Choose SINGLE or OBSTACLE.

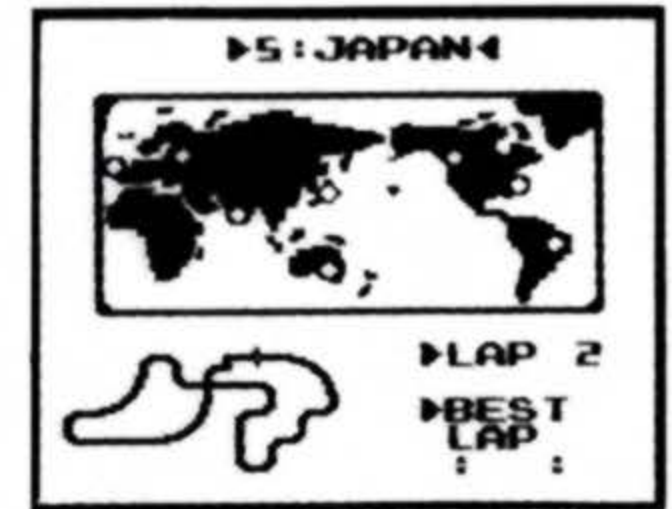
SINGLE puts you on the track alone.

OBSTACLE puts a lot of other cars on the track.



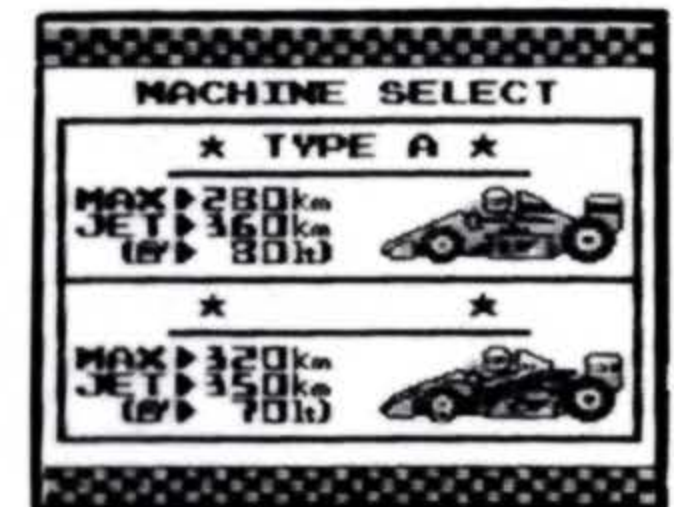
### (2) Track Layout Screen

Choose between the different tracks by using up and down on the + Control Pad. Then press Start.



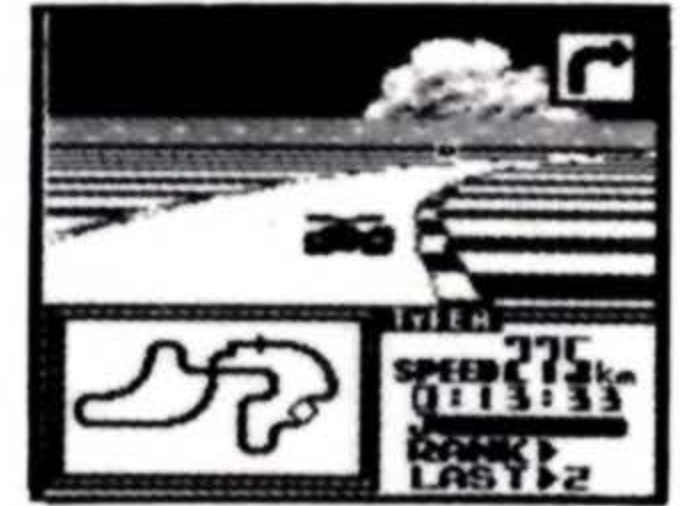
### (3) Car Selection Screen

Select your car using up and down on the + Control Pad. Press Start to race!



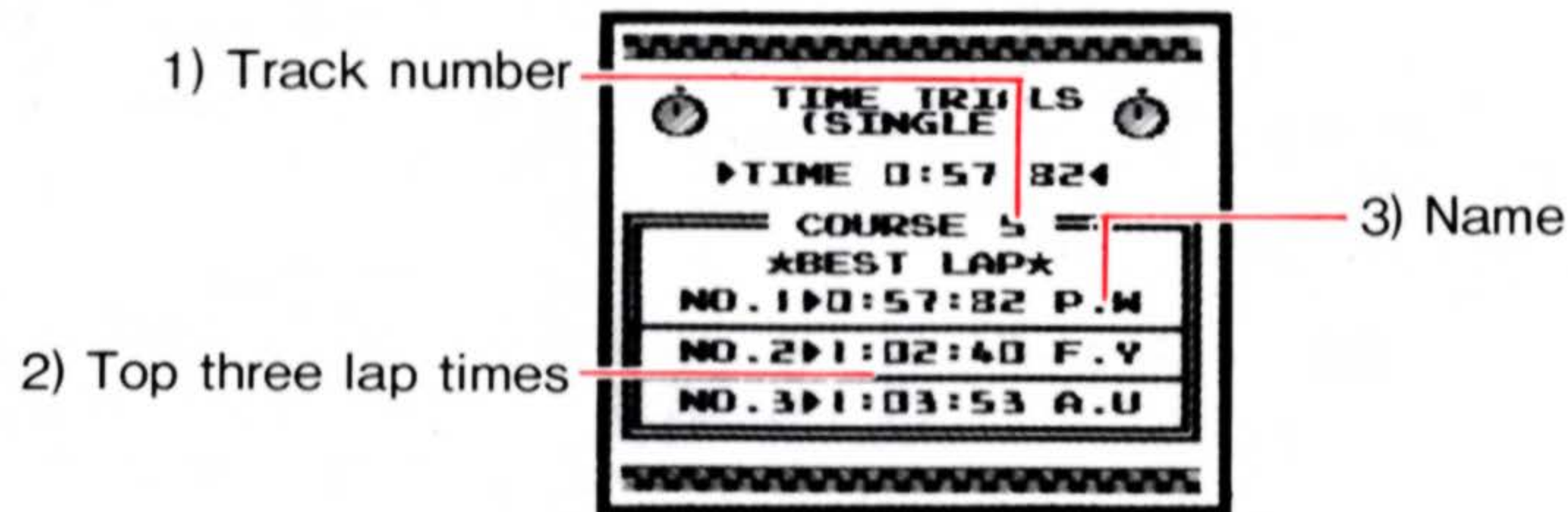
#### (4) Game Screen

The starting line! Each lap of the two lap trial run will be timed.



#### ● Top Three Lap Times

If you press the Select Button while on the Track Selection Screen, you can see the top three lap times for any track.

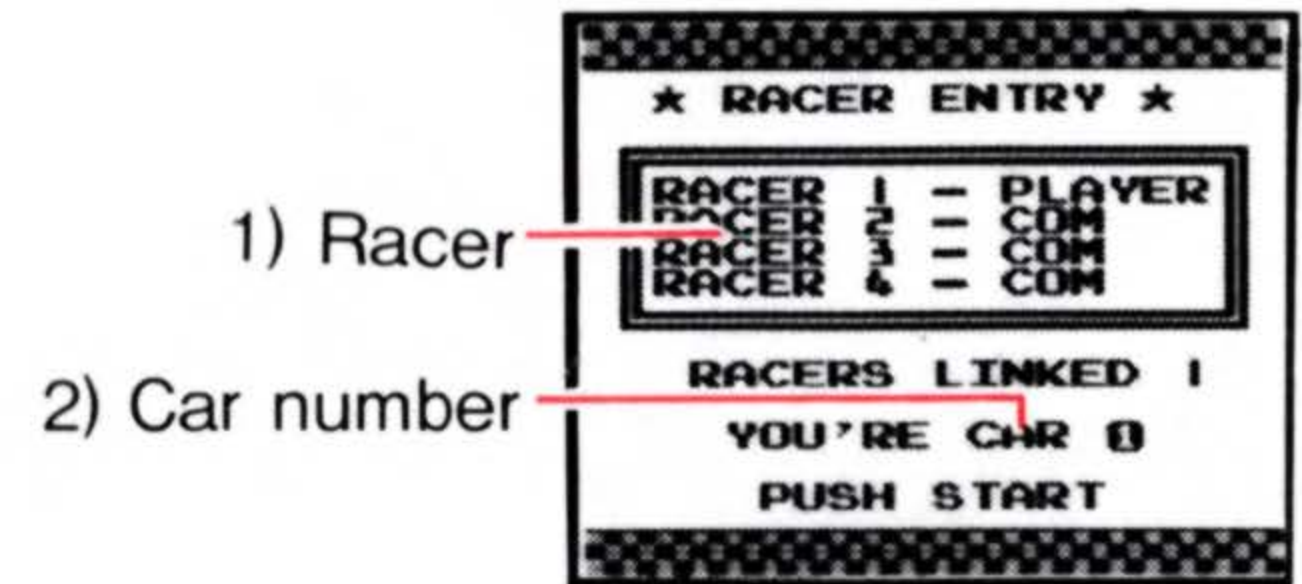


## MULTI GAME

A total of 14 different tracks are separated into three course groups. Four cars compete- the player with the most points wins.

### (1) Entry Screen

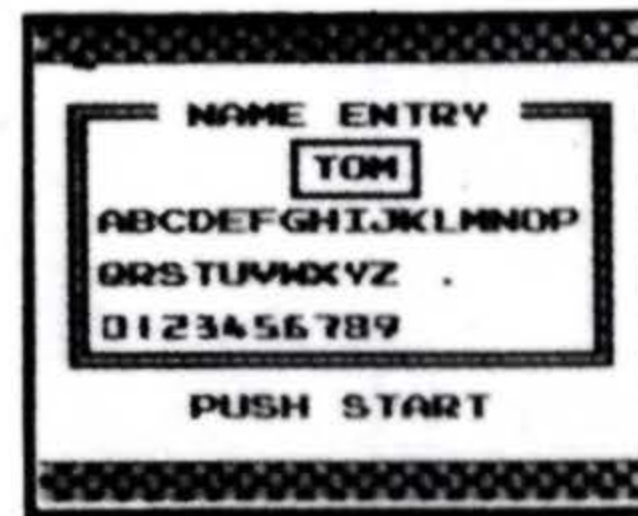
Shows the other racers in the race and displays your car number.



**NOTE:** The racers displayed as COM are controlled by the computer.

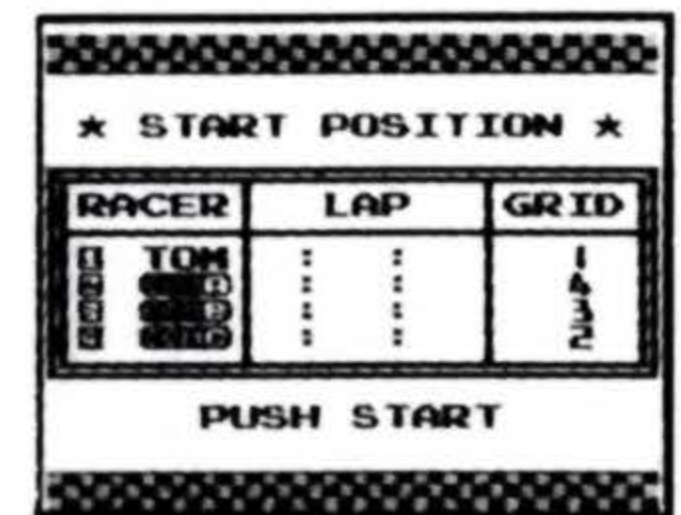
### (2) Entering Your Initials

On this screen, you can enter your initials using the  $\oplus$  Control Pad and the A Button. If you make a mistake, press the B Button to backspace.



### (3) Starting Position

For the first race, the starting grid positions are made randomly. From the second race on, the positions are decided by the fastest lap time.



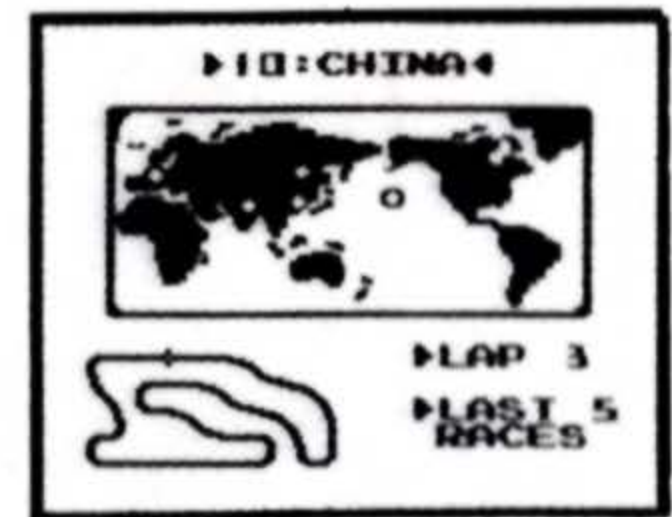
### (4) Course Group Selection

The tracks are divided into three groups. Select the group you wish to race in and press the Start Button.



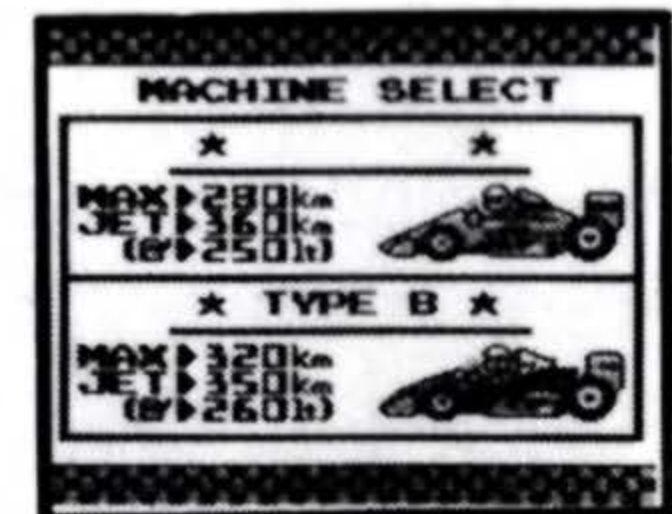
### (5) Track Layout Screen

Shows the track layout.



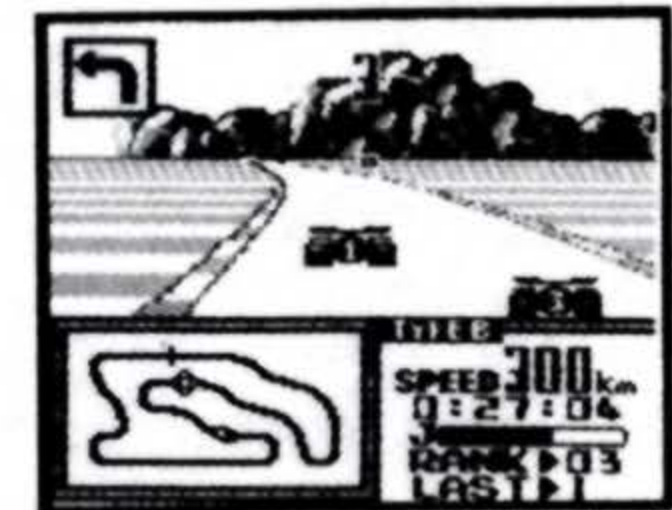
### (6) Car Selection Screen

You can handicap your car by reducing the amount of nitro by using left and right on the + Control Pad.



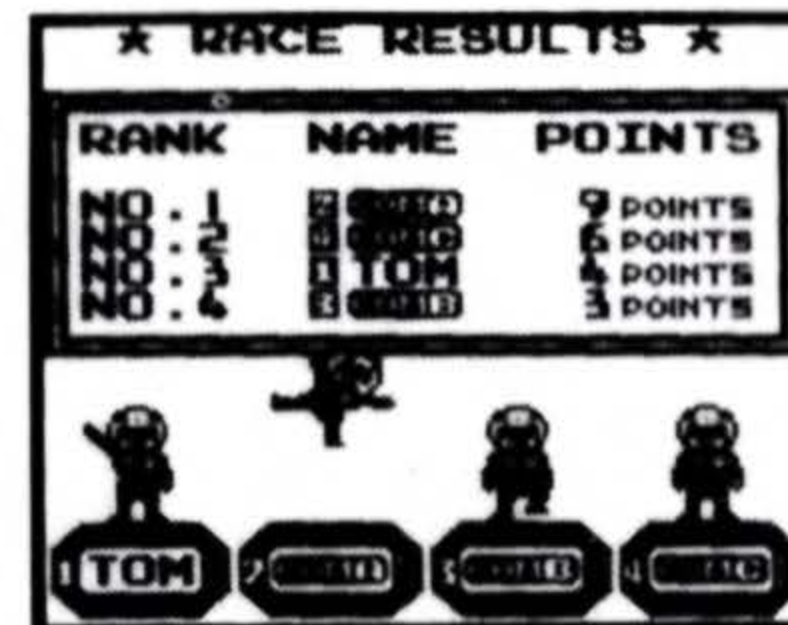
### (7) Game Screen

The race begins! All races are three laps.



#### ● Race Over

When the race is over, the places and points accumulated are displayed.



## PLAYING AGAINST OTHER PEOPLE

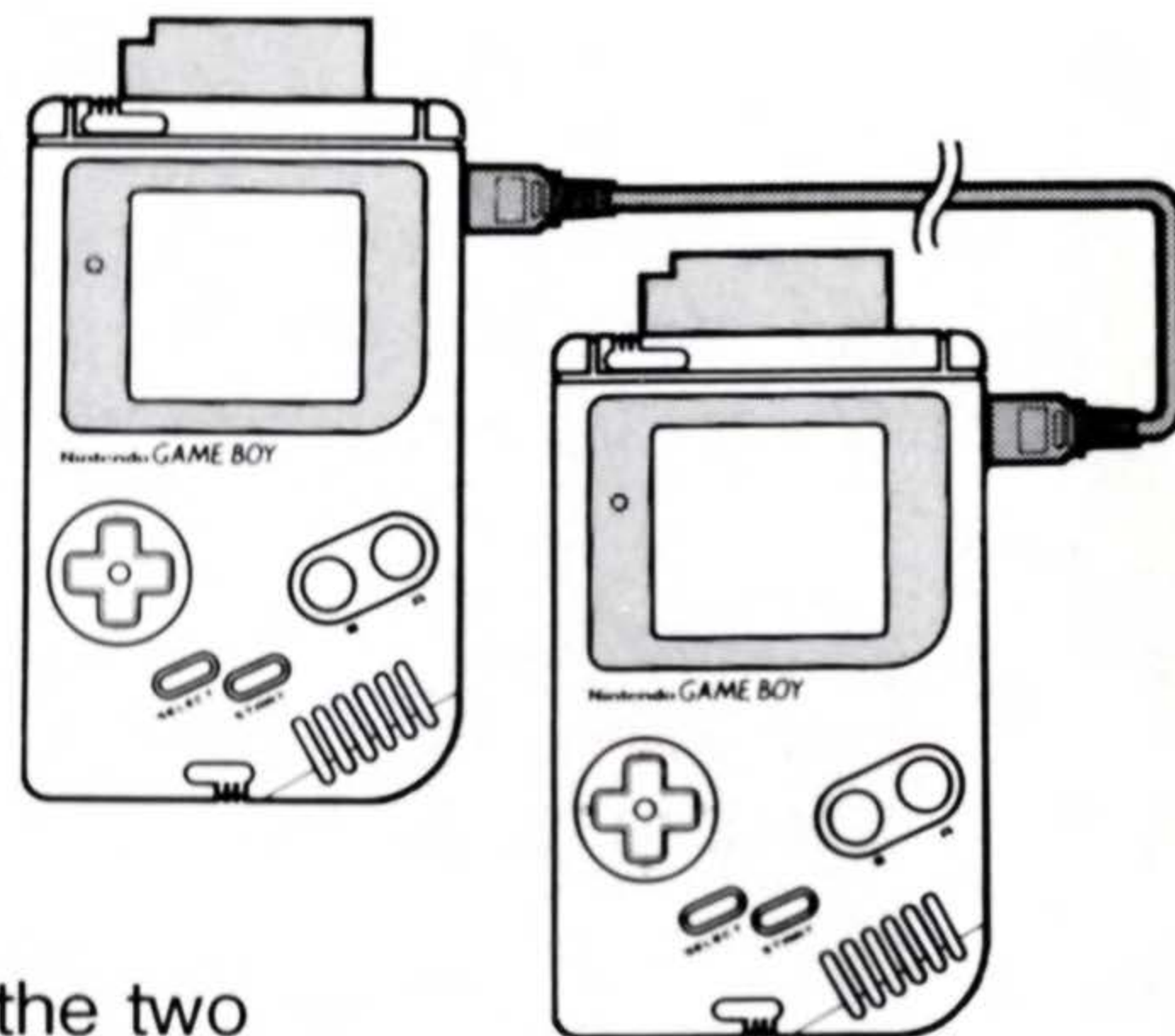
Anywhere from 1 to 4 players can play simultaneously in the F-1 Race MULTI GAME.

To play with two players, you will need the following:

- 2 GAME BOY systems
- 2 F-1 Race Game Paks
- 1 Game Link Cable

(1) Connect the Game Link cable as shown in the figure on the left. Insert both F-1 Race Game Paks and turn both units' POWER switch ON at the same time.

(2) After making sure that the title screen appears on the two GAME BOY units, choose "MULTI GAME" on both units and press the Start Button.



**NOTE:** If the Game Link cable is not securely connected, or it is pulled out and re-connected during play, the game will not function correctly. If this happens, turn both unit's OFF and start again from step one.

The player that selects MULTI GAME first will become RACER 1-CAR 1 and will be in control of selecting the options for the game.

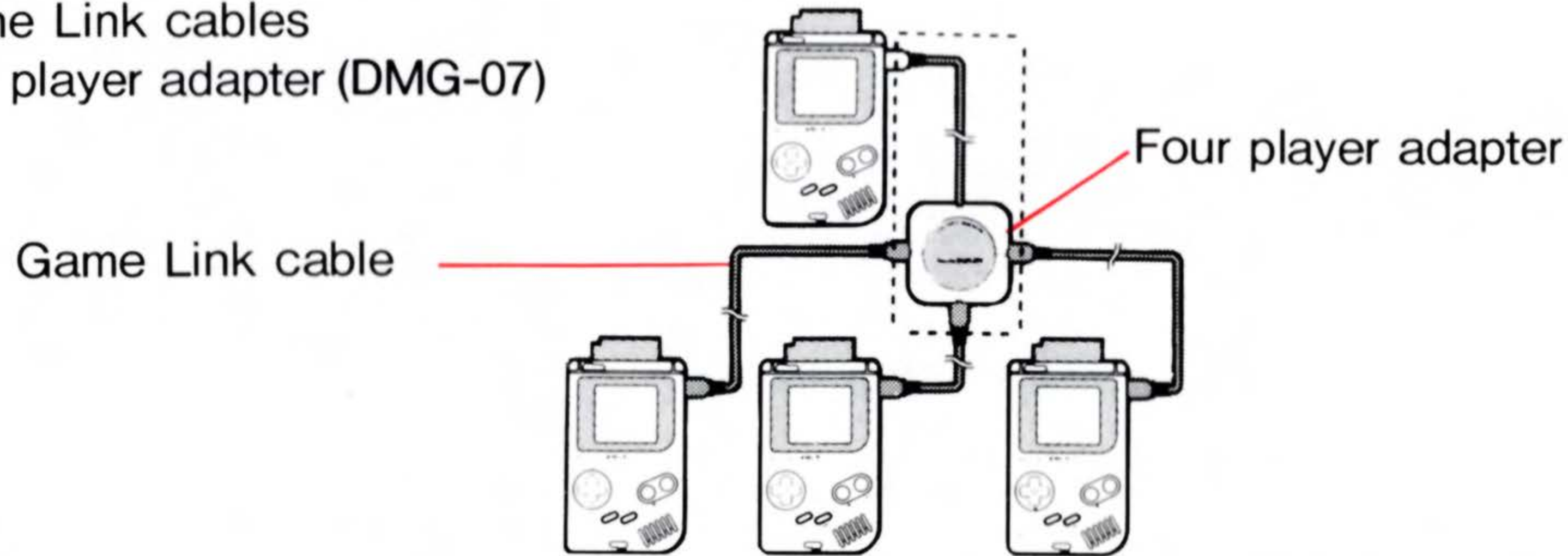
To play with three or four players, you will need the following:

3 or 4 GAME BOY systems

3 or 4 F-1 Race Game Paks

3 Game Link cables

1 Four player adapter (DMG-07)



(1) Connect the first GAME BOY unit to the Four Player Adapter using the cable that is connected to it. Then use the three Game Link Cables to connect all other GAME BOY units to the Four Player Adapter.

(2) Correctly insert the F-1 Race Game Paks into all of the GAME BOY units. Starting with the first GAME BOY unit, turn all of the POWER switches ON.

(3) After making sure that the title screen has appeared on all units, everyone should select MULTI GAME.

**NOTE:**

If the title screen does not appear on all units, start again from step (1).

## HOW TO Play

The game will play the same way as the one player mode in MULTI GAME except that you will be playing against human opponents. The computer will operate any cars that are not human controlled.



NOTE: The player driving car 1 should wait until all cars are shown as not being computer controlled before pressing Start.

## TECHNIQUE

### CAR TYPES

Car TYPE A has great cornering ability. TYPE B has high speed.

### JET

You have limited nitro JET power, so use it wisely. Some corners can be taken with nitro acceleration.

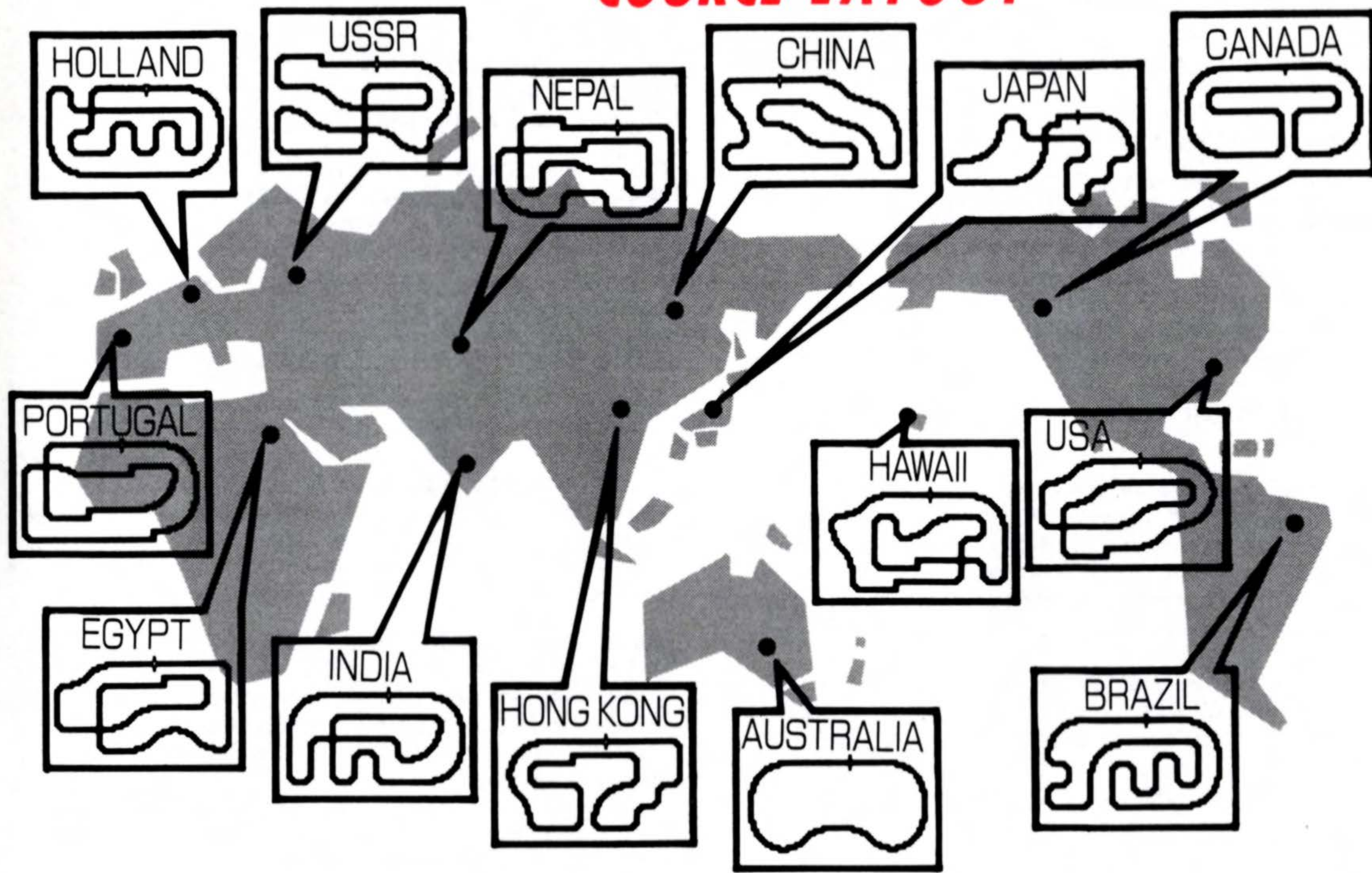
### SLIP STREAM

If you get right behind another car there will be less wind resistance—you'll be able to really cruise! Use some nitro, and you'll really fly!



# **F-1 RACE WORLD MAP**

## **COURSE LAYOUT**



## 90-DAY LIMITED WARRANTY

Nintendo of America Inc. ("Nintendo") warrants to the original purchaser that this product shall be free from defects in material and workmanship for a period of 90 days from the date of purchase. If a defect covered by this warranty occurs during this 90-day warranty period, Nintendo will repair or replace the product or component part, at its option, free of charge.

## WARRANTY SERVICE

To receive this warranty service:

1. **DO NOT** return your product to the retailer.
2. Please call Nintendo's **WORLD CLASS SERVICEsm** Center at 1-800-255-3700. Our hours of operation are from 4:00 am to Midnight, Pacific Time Monday through Saturday, and from 8:00 am to 5:00 pm, Pacific Time Sundays (times subject to change). If the Nintendo Service Representative is unable to solve the problem over the telephone, you will be referred to the nearest Nintendo **WORLD CLASS SERVICEsm** location for prompt, professional warranty service.

To satisfy the needs of our customers, Nintendo maintains a nationwide network of **Authorized WORLD CLASS SERVICEsm CENTERS** located in major metropolitan areas\* and also offers express factory service. In some instances it may be necessary to ship the complete product, **FREIGHT PREPAID AND INSURED FOR LOSS OR DAMAGE** to the nearest service location.

This warranty shall not apply if the product has been damaged by negligence, accident, commercial use, unreasonable use, modification, tampering, or by other causes unrelated to defective materials or workmanship. This warranty shall not apply if any product serial numbers have been altered, defaced, or removed.

## WARRANTY LIMITATIONS

ANY APPLICABLE IMPLIED WARRANTIES, INCLUDING WARRANTIES OF MERCHANTABILITY AND FITNESS FOR A PARTICULAR PURPOSE, ARE HEREBY LIMITED TO NINETY DAYS FROM THE DATE OF PURCHASE AND ARE SUBJECT TO THE CONDITIONS SET FORTH HEREIN. IN NO EVENT SHALL NINTENDO BE LIABLE FOR CONSEQUENTIAL OR INCIDENTAL DAMAGES RESULTING FROM THE BREACH OF ANY EXPRESS OR IMPLIED WARRANTIES.

The provisions of this warranty are valid in the United States and Canada only. Some states/provinces do not allow limitations on how long an implied warranty lasts or exclusion of consequential or incidental damages, so the above limitation may not apply to you. This warranty gives you specific legal rights, and you may have other rights which vary between states/provinces.

## REPAIR/SERVICE AFTER EXPIRATION OF WARRANTY

To receive service after the expiration of your warranty:

1. Please call Nintendo's **WORLD CLASS SERVICEsm** Center at 1-800-255-3700. Our hours of operation are from 4:00 am to Midnight, Pacific Time Monday through Saturday, and from 8:00 am to 5:00 pm, Pacific Time Sundays (times subject to change). If the Nintendo Service Representative is unable to solve the problem over the telephone, you will be referred to the nearest Nintendo **WORLD CLASS SERVICEsm** location for prompt, professional repair and replacement components.

To satisfy the needs of our customers, Nintendo maintains a nationwide network of **Authorized WORLD CLASS SERVICEsm CENTERS** located in major metropolitan areas\* and also offers express factory service. In some instances it may be necessary to ship the complete product, **FREIGHT PREPAID AND INSURED FOR LOSS OR DAMAGE** to the nearest service location.

\*United States only. In Canada Nintendo provides service through its Canadian Service Center.









Nintendo of America Inc.  
P.O. Box 957, Redmond, WA 98073-0957 U.S.A.

PRINTED IN JAPAN