

Nintendo

GAME BOY[®]

Ubi Soft
ENTERTAINMENT

DMG-EB-USA-1

STAR
THE
EMPIRE
STRIKES BACK
WARS[™]

INSTRUCTION BOOKLET

A SPECIAL MESSAGE FROM UBI SOFT ENTERTAINMENT

Thank you for selecting **The Empire Strikes Back** for your Game Boy system. We are proud to offer you this action-packed adventure complete with the finest graphics and stereo sound available for the Game Boy. We hope you enjoy the excitement and challenges that await you...and may the force be with you.



THIS OFFICIAL SEAL IS YOUR ASSURANCE THAT NINTENDO HAS APPROVED THE QUALITY OF THIS PRODUCT. ALWAYS LOOK FOR THIS SEAL WHEN BUYING GAMES AND ACCESSORIES TO ENSURE COMPLETE COMPATIBILITY WITH YOUR GAME BOY SYSTEM. ALL NINTENDO PRODUCTS ARE LICENSED BY SALE FOR USE ONLY WITH OTHER AUTHORIZED PRODUCTS BEARING THE OFFICIAL NINTENDO SEAL OF QUALITY.

LICENSED BY



NINTENDO, GAME BOY AND THE
OFFICIAL SEALS ARE TRADEMARKS OF
NINTENDO OF AMERICA INC.

© 1989 NINTENDO OF AMERICA INC.

SAFETY PRECAUTIONS

Follow these suggestions to keep your **The Empire Strikes Back™** Game Pak in perfect operating condition.

1. DO NOT subject your Game Pak to extreme temperatures, either hot or cold. Always store it at room temperature.
2. DO NOT touch the terminal connectors on your Game Pak. Keep it clean and dust-free by always storing it in its protective plastic case.
3. DO NOT try to disassemble your Game Pak.
4. DO NOT let your Game Pak come in contact with thinners, solvents, benzene, alcohol, or any other strong cleaning agents that can damage it.

A D V I S O R Y

A very small portion of the population may experience epileptic seizures when viewing certain kinds of flashing lights or patterns that are commonly present in our daily environment. These persons may experience seizures while watching some kinds of television pictures or playing certain video games including games played on the Game Boy Compact Video Game System. Players who have not had any previous seizures may nonetheless have an undetected epileptic condition. Consult your physician before playing video games if you have any epileptic condition. Consult your physician if you experience any of the following symptoms while playing video games: altered vision, muscle twitching, other involuntary movements, loss of awareness of your surroundings, mental confusion and / or convulsions.

EPISODE V: THE EMPIRE STRIKES BACK

It is a dark time for the Rebellion. Although the Death Star has been destroyed, Imperial troops have driven the Rebel forces from their hidden base and pursued them across the galaxy.

Evading the dreaded Imperial Starfleet, a group of freedom fighters led by Luke Skywalker has established a new secret base on the remote ice world of Hoth.

The evil lord Darth Vader, obsessed with finding young Skywalker, has dispatched thousands of remote probes into the far reaches of space...

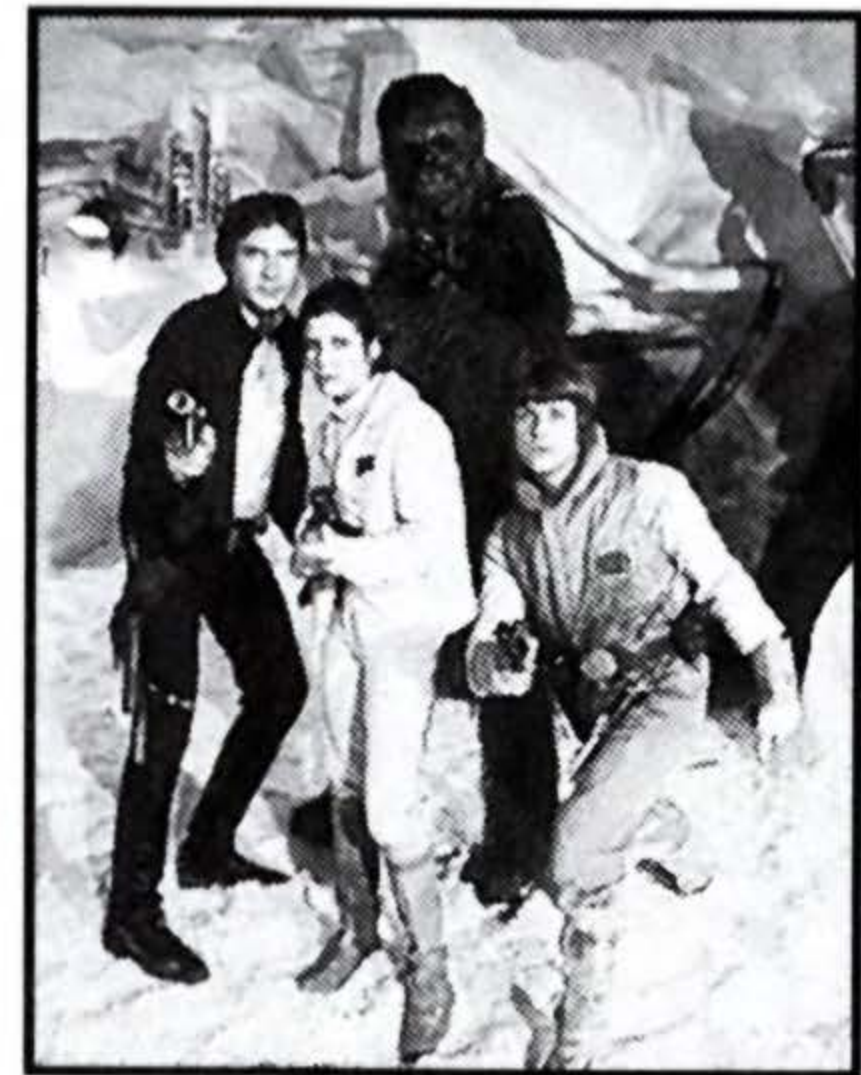


TABLE OF CONTENTS

Getting Started	6
Controls	8
Force Powers	11
Hoth Ice Caverns	13
AT-AT Walkers	14
Evacuation of Echo Base	15
Dagobah	16
Jedi Training	17
Bespin	18
Cloud City	19
Pursuit of Boba Fett	20
Return to Cloud City	20
Darth Vader	21
90-Day Limited Warranty	22

GETTING STARTED

With your Game Boy turned off, insert **The Empire Strikes Back** Game Boy game pak, then turn on your Game Boy. If you would like to skip the introductory sequences and begin play, press START.

You will first be directing Luke riding his Tauntaun through the ice fields of Hoth as he sets out to investigate the “meteor” that has landed nearby.

In the upper left-hand corner of the screen are the measures of your health and Force ability (when Luke is on the Tauntaun, the health meter shows the Tauntaun’s health. If you dismount, the health meter will, instead, show *Luke’s* health). If an enemy touches or shoots Luke, his health will diminish (he can collect more health by defeating enemies). Both Luke and the Tauntaun begin with their full capacity of health, but you will have to find and collect Force power-ups in order to replenish your force ability.

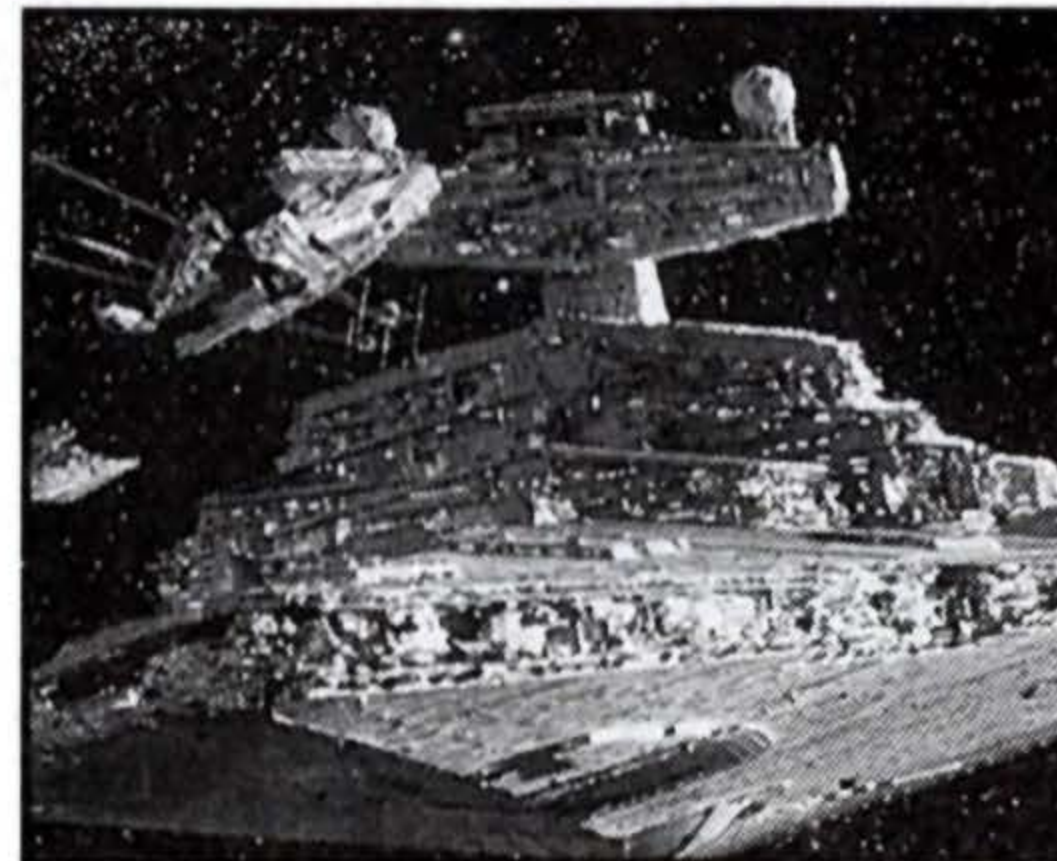
GETTING STARTED

Number of Players: **The Empire Strikes Back** is a one player game.

Game Over: The game is over whenever you use up all of your continues.

Continue Yes: The game starts again from the beginning of the level that you were in. You keep your force ability level, all of your powers and, if you already found it, the lightsaber.

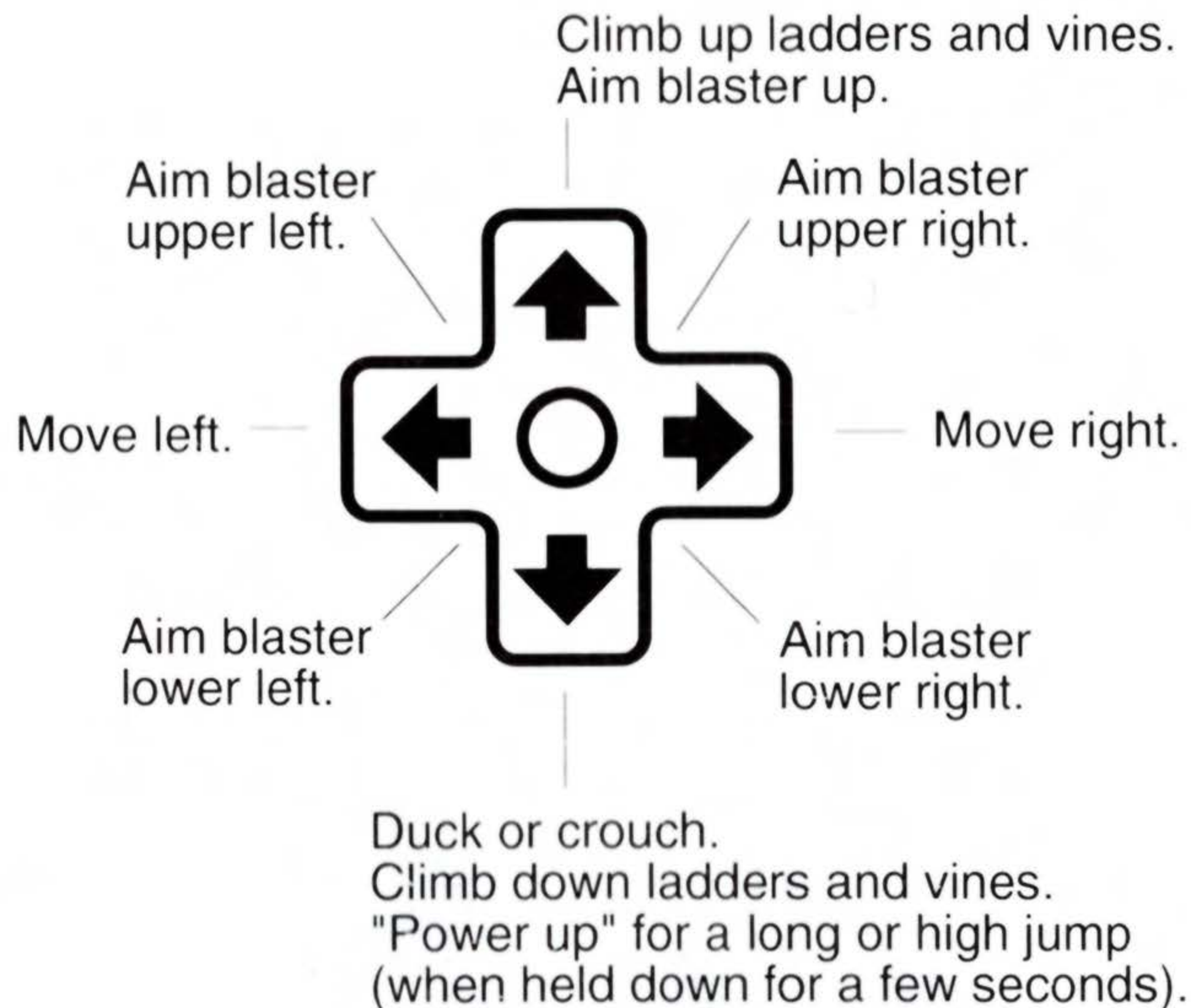
Continue No: The game will end and the title screen will appear. There are a limited number of continues available. When all of your continues have been used, the GAME OVER screen will appear.



CONTROLS

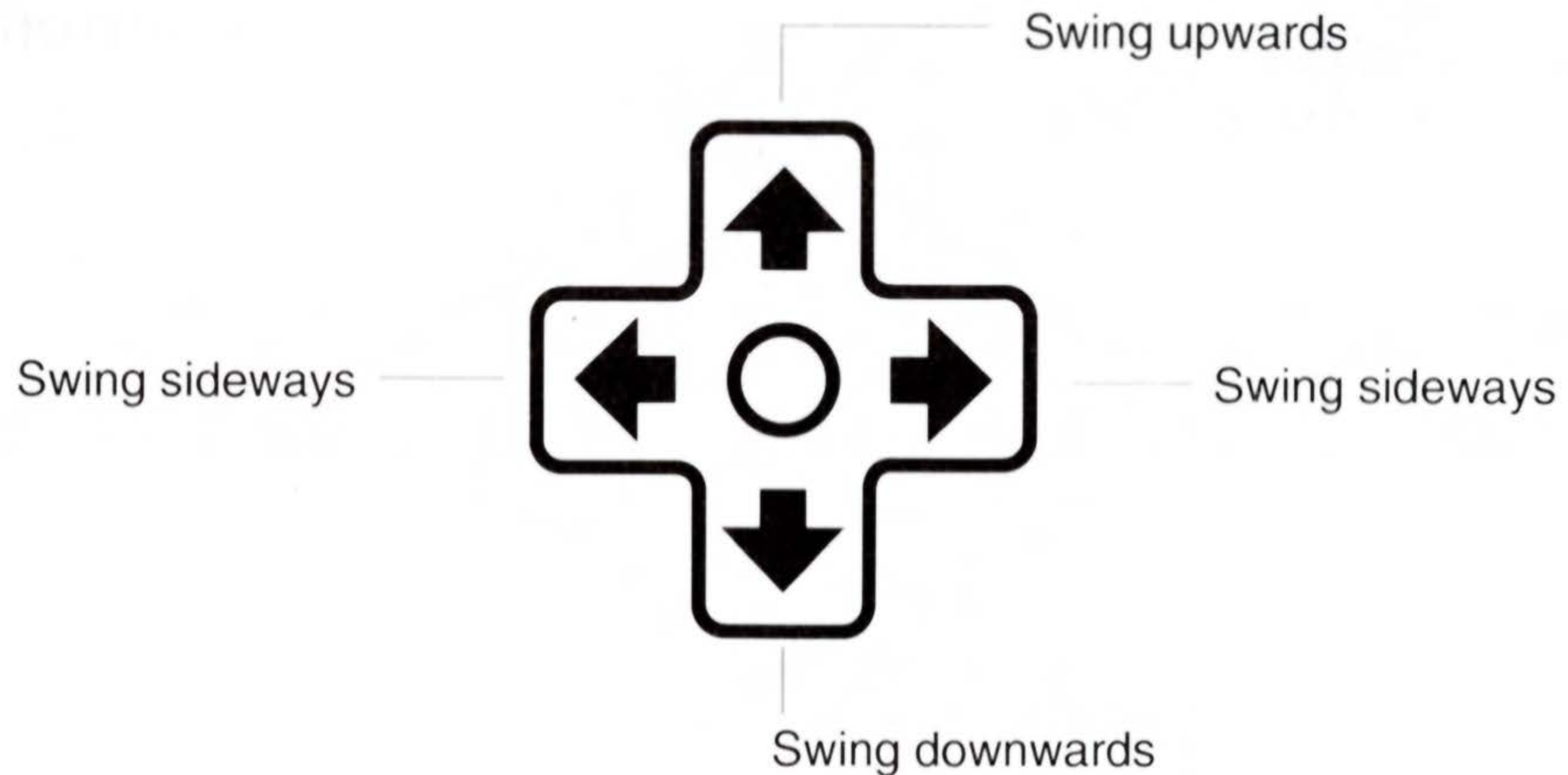
In **The Empire Strikes Back**, you will be controlling Luke Skywalker in his efforts to rescue his friends from the Empire. At times, you may ride Luke's Tauntaun, or pilot a snowspeeder, AT-ST walker, or X-wing fighter.

Please read about all of the player controls to understand how to direct Luke, his force powers, and the vehicles.



LIGHTSABER CONTROLS

Press the B button to swing the lightsaber.
You can change the type of attack by
pressing a direction on the control pad at
the same time:



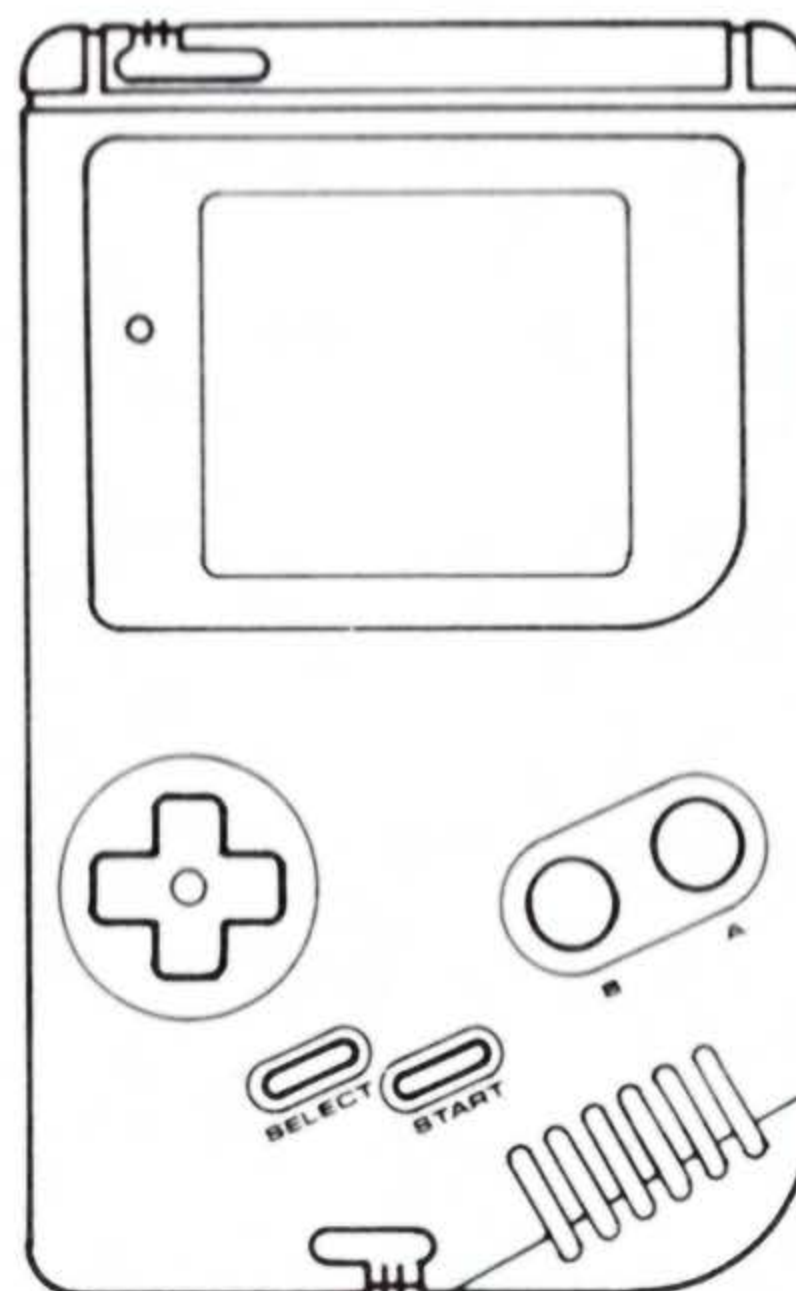
CONTROLS

B BUTTON

- Fire weapon.
- Swing lightsaber.
- Activate Force Power.

SELECT BUTTON

- Switch between blaster and, once you've found it, the lightsaber (if Luke is riding the Tauntaun, press the B button and SELECT at the same time to switch weapons).
- Dismount Tauntaun.
- Exit AT-ST Walker.



A BUTTON

- Jump.
- Mount Tauntaun.
- Enter AT-ST Walker.
- Activate Force Power.

START BUTTON

- Pauses the game.
Press again to continue.
- Choose Force Power (see below), if you have any.

FORCE POWERS

Throughout the course of the game, you will occasionally find icons for various Force Powers, which can enhance Luke's abilities and weapons. When you are directing Luke on foot or on the Tauntaun, pressing the START button will allow you to choose from amongst your available Force Powers. Some of the available Force Powers are:



Jump higher or farther than normal.



Run faster than normal.



Reflect your enemies' shots.



Enhance the power of your lightsaber.



Enhance the power of your blaster.



Levitate.



Convert Force Ability to Health.



Graphic Eye.

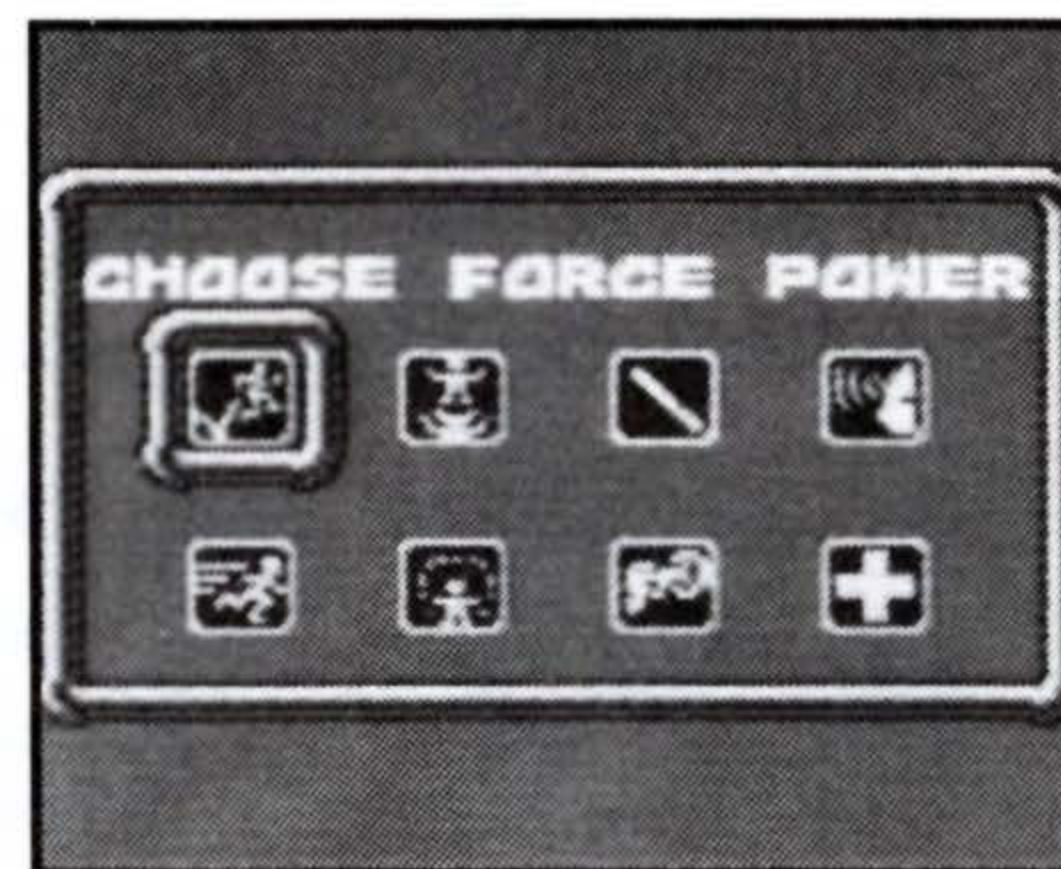
FORCE POWERS

To select a Force Power, press the START button, then use the control pad to toggle between the Powers. Press either the A or B button to “turn on” the Power. If you change your mind and want to cancel, press the START button again.

Remember that, in order to use the force powers, you must keep your Force Ability charged.

You cannot make use of your force powers when:

- You are riding the Tauntaun.
- You are battling the AT-ST walker at the Rebel base.
- You are piloting Luke's X-wing fighter.



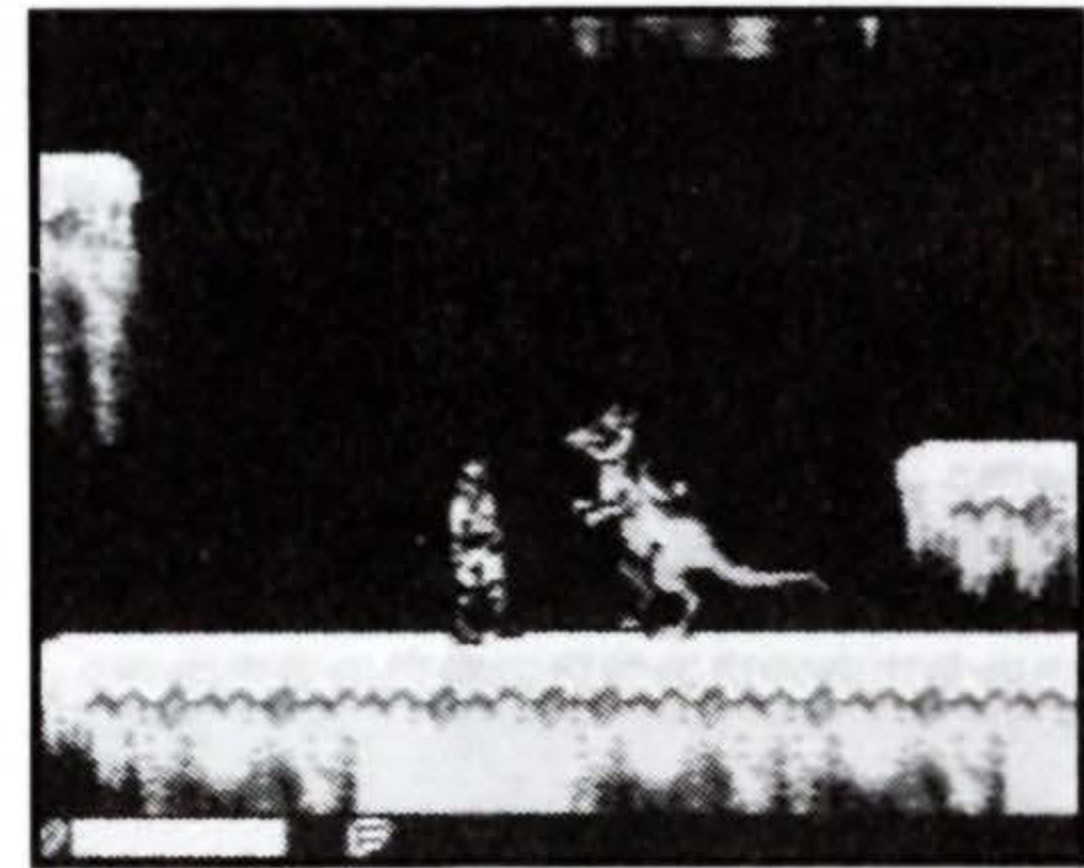
HOTH ICE CAVERNS

The “meteor” that Han has warned you about is, in fact, an Imperial Probe Droid...you must fight your way through the ice caverns of Hoth in order to find and destroy it. Along the way, you will encounter Wampas and probe droids.

You can replenish your health and Force Ability by finding first aid kits and Force power-ups.

Your Tauntaun can replenish its health by eating the moss found in the Ice Caverns.

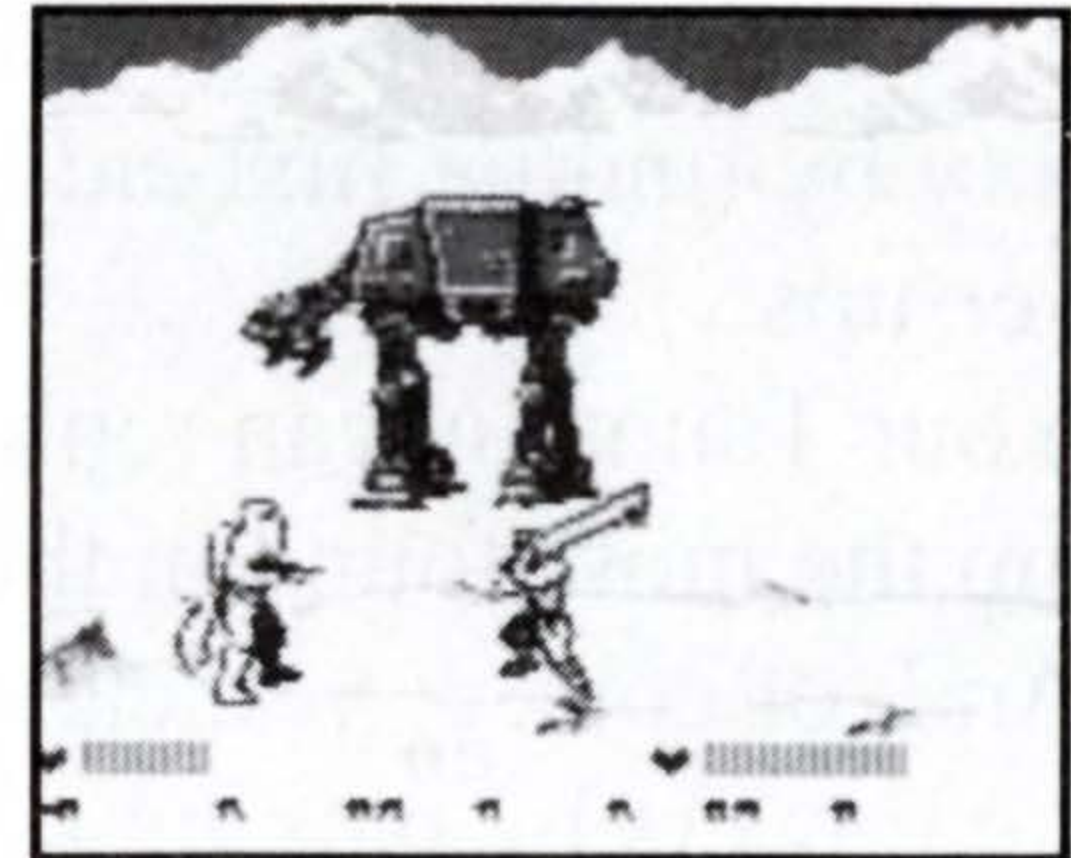
And, of course, you can enhance your Force Powers by picking up Force Power icons.



AT-AT WALKERS

Pilot your snowspeeder across the ice fields and engage AT-AT Walkers and stormtroopers in order to give the Rebel forces time enough to retreat. The map at the bottom of the screen shows the location of your snowspeeder and your enemies.

If your snowspeeder is shot down, Luke can get another by running back to the rebel base, or defeating a sufficient number of stormtroopers. Otherwise, he will have to engage the stormtroopers and the remaining AT-AT Walkers on foot.



EVACUATION OF ECHO BASE

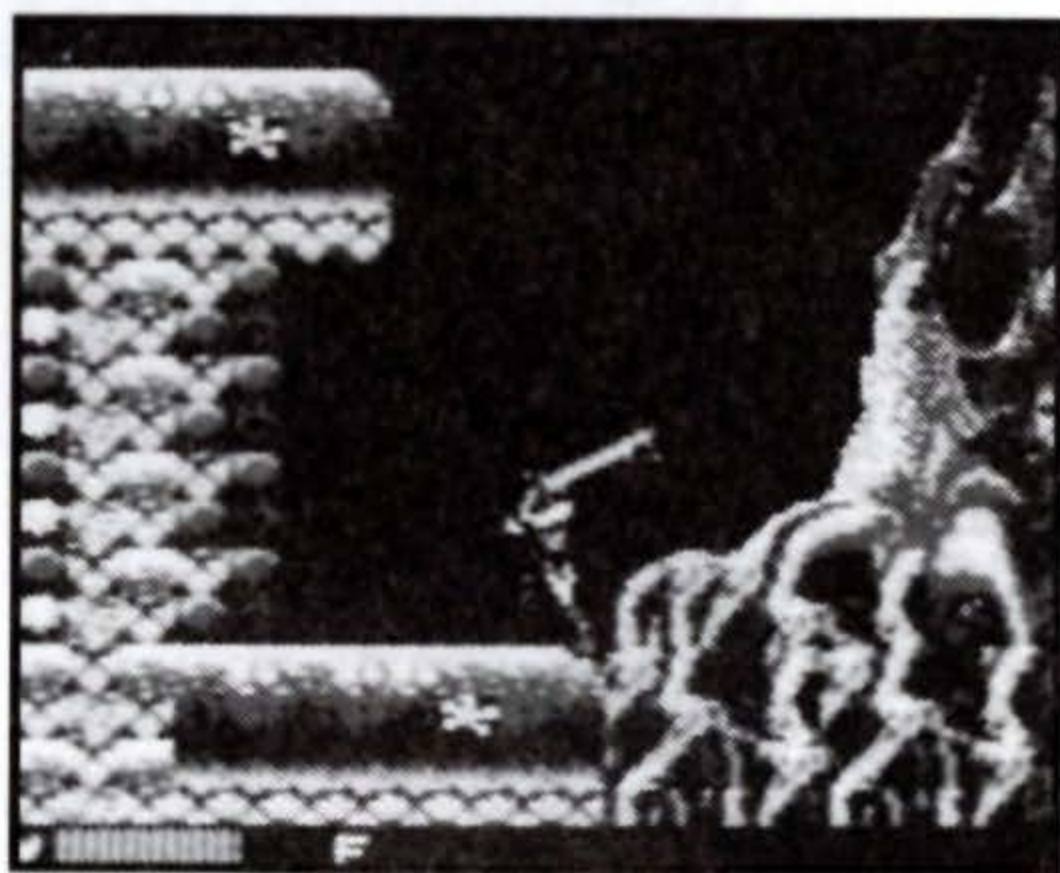
Imperial Stormtroopers have entered the Rebel base and the order to evacuate has been given. Fight your way past stormtroopers and more probe droids...and meet a new enemy: the AT-ST walker.

With a little luck, you might be able to board an abandoned or disabled AT-ST and turn it against the Imperial forces. Be quick, or your opportunity to use the AT-ST will disappear.



DAGOBAH

Follow Obi-Wan's advice and seek out Yoda. You'll have to avoid or fight your way past underslugs, holgnots, vine-snakes, spiders, elephant slugs, dagbats, exploding mushrooms, and praying mantis.



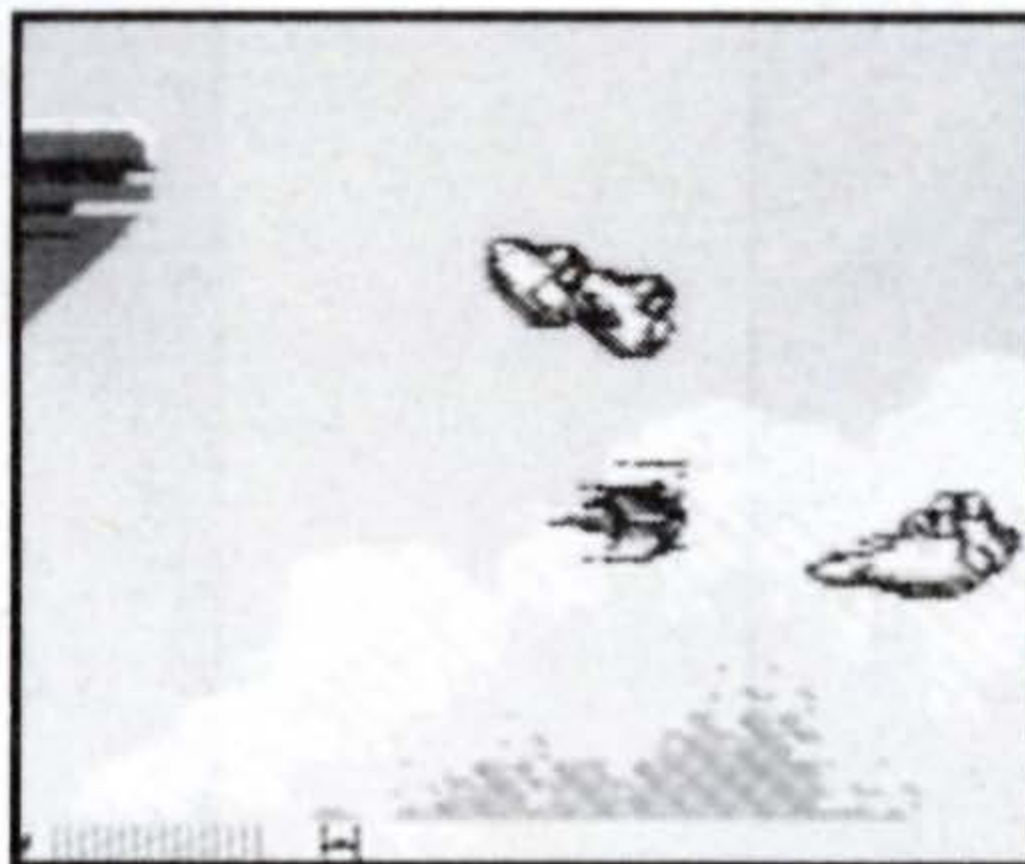
JEDI TRAINING

Yoda has accepted you as a Jedi Knight-in-training. Follow his instructions...in the end, you must confront and conquer Luke's own fears.



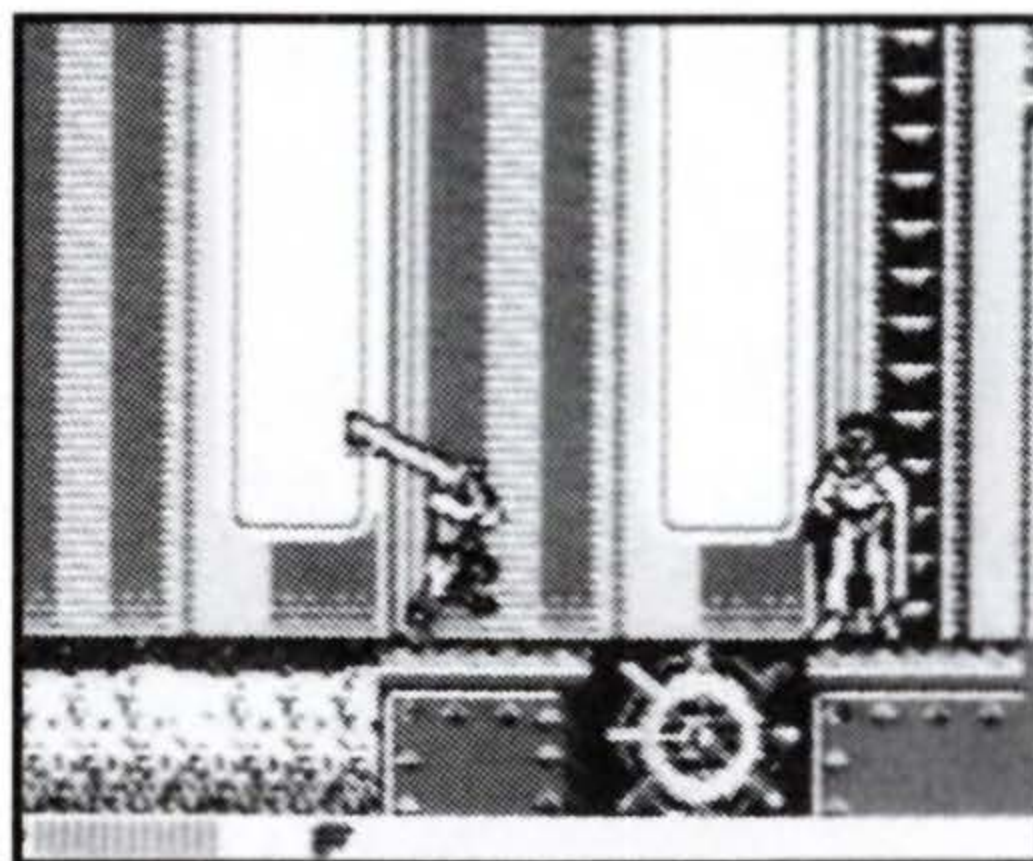
BESPIN

You have learned through the Force that your friends are in grave danger. In your X-wing, you make your way to Bespin. Before you can enter Cloud City, you will have to engage and destroy the cloud cars and TIE fighters.



CLOUD CITY

To rescue your friends, you must fight your way through the corridors of Cloud City. You will encounter Bespin guards, bounty hunters, cannon walkers and Boba Fett.



PURSUIT OF BOBA FETT

Han has been taken prisoner by his old adversary, Boba Fett. To rescue Han, you must defeat Boba Fett's ship, the *SLAVE I*.



RETURN TO CLOUD CITY

Luke returns to Cloud City to rescue Princess Leia.



DARTH VADER

You must find and confront Darth Vader, the Dark Lord of the Sith. This final battle will not be easy; don't give in to the temptations of the dark side of the Force.



90 day Warranty

Ubi Soft guarantees this Game Pak against any defect for a period of ninety (90) days from the date of purchase. If a manufacturing defect appears during the guarantee period, Ubi Soft will repair or replace the defective GamePak free of charge.

To take advantage of this guarantee, please return the Game Pak to Ubi Soft with the original receipt and proof of purchase. If a disk is returned without proof of purchase or after the guarantee period has expired, Ubi Soft will choose either to repair or to replace it at customer expense. This guarantee is invalid if the Pak has been damaged through negligence, accident or misuse, or if it has been modified after acquisition.



625 Third Street, 3rd Floor - San Francisco, CA 94107
Technical Support Hotline : 1-800-UBI-SOFT
Visit our website : <http://www.ubisoft.com>

NOTES



625 Third Street, 3rd Floor - San Francisco, CA 94107
Technical Support Hotline : 1-800-UBI-SOFT
Visit our website : <http://www.ubisoft.com>

Printed in Japan