

NTSC

the SIMPSONS GAME™



MATT
GROENING



Game Experience May
Change During Online Play



WARNING

Before playing this game, read the Xbox 360™ Instruction Manual and any peripheral manuals for important safety and health information. Keep all manuals for future reference. For replacement manuals, see www.xbox.com/support or call Xbox Customer Support (see inside of back cover).

Important Health Warning About Playing Video Games

Photosensitive Seizures

A very small percentage of people may experience a seizure when exposed to certain visual images, including flashing lights or patterns that may appear in video games. Even people who have no history of seizures or epilepsy may have an undiagnosed condition that can cause these "photosensitive epileptic seizures" while watching video games.

These seizures may have a variety of symptoms, including lightheadedness, altered vision, eye or face twitching, jerking or shaking of arms or legs, disorientation, confusion, or momentary loss of awareness. Seizures may also cause loss of consciousness or convulsions that can lead to injury from falling down or striking nearby objects.

Immediately stop playing and consult a doctor if you experience any of these symptoms. Parents should watch for or ask their children about the above symptoms—children and teenagers are more likely than adults to experience these seizures. The risk of photosensitive epileptic seizures may be reduced by taking the following precautions:

- Sit farther from the television screen.
- Use a smaller television screen.
- Play in a well-lit room.
- Do not play when you are drowsy or fatigued.

If you or any of your relatives have a history of seizures or epilepsy, consult a doctor before playing.

CONTENTS

STAY IN THE GAME AND REGISTER WITH EA!	1
COMPLETE CONTROLS	2
PLAYING THE GAME	6
Game Screen	6
Navigating Springfield	8
Collectibles	8
Saving and Loading	8
OTHER GAME MODES	9
Two-Player	9
Time Challenges	9
CONNECT TO XBOX LIVE	10
WARRANTY	11
CUSTOMER SUPPORT - HERE TO HELP YOU!	11

STAY IN THE GAME AND REGISTER WITH EA!

Create an EA Member Account and register this game to receive free cheat codes and game hints from EA. Creating an EA Member Account and registering this game is fast and easy!

Visit our website at www.gamereg.ea.com and sign up today!



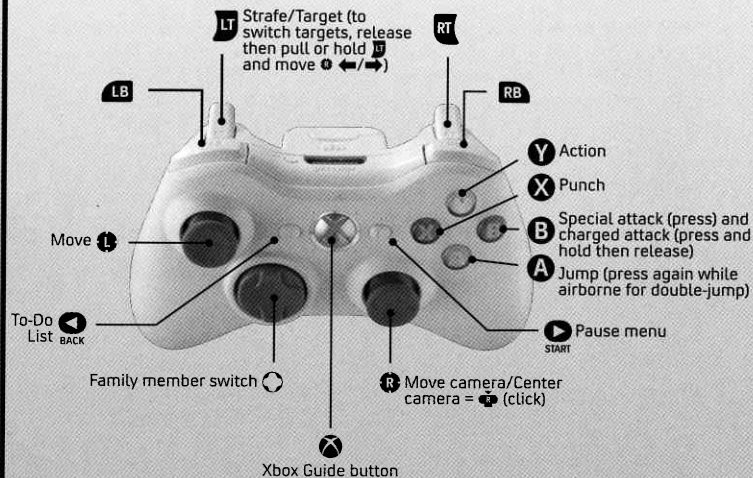
COMPLETE CONTROLS

When the Simpsons realise they are living in a video game, each member of the family discovers their own unique video game power. Lisa is very spiritual. Bart unleashes his alter ego, Bartman. Marge is good at nagging. Homer is good at eating. Read on for the common gameplay controls as well as each Simpson's special abilities.

- When you re-play an episode, you can press **B** to skip some cut scenes.

General Gameplay

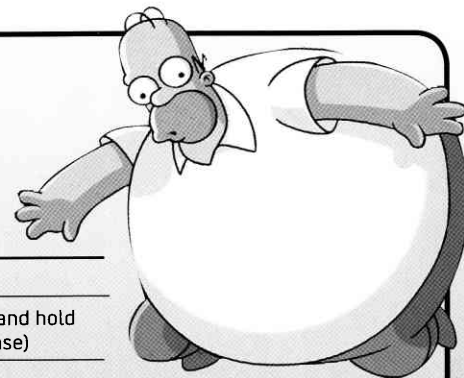
These are the common controls for all Simpson family members.



- Want to really sock it to an enemy? Try this power combo: **X X X Y**!

Note: You cannot switch Simpson characters when either your current character or your buddy is in a certain state, like jumping, climbing or gliding.

Note: For more information on each character's special charged-up attack (in bold below), see *Power Meter* on p. 7.



Homer

Burp stun	B
Power Burp	B (press and hold then release)

Homer Ball

Activate/exit Homer Ball	RT
Forward burst	X
Downward smash	A then X



Gummi Homer

Activate/exit Gummi Homer	RB
Shoot gummi ammo	B
Target Gummi Homer	LT

Helium Homer

Activate/exit Helium Homer	Y
Gain altitude	A
Jet forward	X



Bart

Activate/shoot slingshot **B**

Target slingshot **LT**

Power Shot **B** (press and hold then release)

Bartman

Bartman cape glide **RT** (hold) while airborne

Fire grapple **Y**

Move forward on wires **←** **↑**

Turn around on wires **←** **↔**

Drop down from wires **↓**

Jump from wires **←** **↔** plus **A**



Lisa

Activate sax/Sax stun **B**

Saxophone Spin **B** (press and hold then release)

Hand of Buddha

Enter/exit Hand of Buddha **Y**

Move Hand of Buddha **L**

Pick up object **RT** (hold; release to drop object)

Move Hand of Buddha faster **RB** (hold)

Lightning **B**

Freeze **A**

Power Flick **X**

• Lisa can only enter Hand of Buddha at Buddha statues.

Marge

Megaphone Blowback **B** (press and hold then release)

Deploy Maggie (activate switches) **Y** at Maggie port when prompted

Mob Marge

Gather mob **B**

Order single mob member **LT** to target then **B** to order



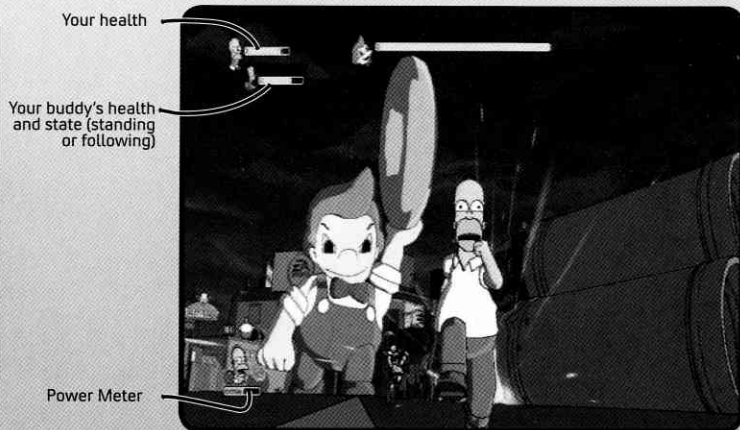
Find out more about EA™ online at www.ea.com

PLAYING THE GAME

Get ready for a Simpsons video game adventure like no other! When the Simpsons find out they live inside a video game, they'll need all their skills to discover the evil genius who stuck them there! They'll even need special power-up video game skills to complete their existential quest!

Note: You can control how much chatter you hear from characters in the game. From the main menu or Pause menu, select **OPTIONS** and then **AUDIO**, then move the Verbosity slider left to hear less player chatter or right to hear more.

GAME SCREEN



Power Meter

Some of the Simpsons' special abilities cost Power. Eliminating enemies fills the Power Meter and each Simpson has something they can collect to fill it. The Simpsons also have special charged-up versions of their attacks. Once you fill the meter past the halfway marker, the charged attack becomes available by pressing and holding **Ⓢ**. Release **Ⓢ** to fire. Using the power charged-up attack depletes the meter, so dispatch more baddies or collect more of the special item to keep those powerful attacks coming!

- Earn six trophies (they don't all have to be for the same character) to increase the Power Meter capacity for each family member.

Tip: Find every collectible in the game to fill the family's meters with infinite Power!

	Power Charged-Up Attack	Effect	Power Fill Item
Homer	Power Burp	More powerful blast	Food
Bart	Power Shot	Stronger shot with radial damage effect	Special ammo*
Lisa	Saxophone Spin	Knocks enemies and does heavy damage	Lotus flowers
Marge	Megaphone Blowback	Powerful megaphone blast	Batteries

* Bart's special ammo is different in different episodes. From crystals to baseballs to pinecones, Bart will use whatever's handy to take down bad guys.



NAVIGATING SPRINGFIELD

Why walk when you can take the bus? Springfield has an extensive transportation system to get you where you want to go in a hurry. The bus stops also serve as your interface for changing characters. Just approach a bus stop, press **Y** and either select another location on the Springfield map to visit or choose to play as a new character. You can also access the Springfield Map System from the To-Do List (press **ESC**).

- The map (press **ESC** then **Y**) can come in really handy in certain episodes, for example in Medal of Homer where it shows you the location of all the white flags.

COLLECTIBLES

Family Member Collectibles

Each Simpson family member has certain things only they collect. For Marge, it's Try-n-Save coupons. For Homer, it's Duff bottle caps. Lisa collects Malibu Stacy seals, while Bart gathers Krusty the Clown coupons. If a family member finds all of his or her collectibles in an episode, you get a trophy. Each six trophies earned increases the family's Power Meters.

Clichés

Ah, video game clichés. Double-jumps, pressure pads, breakable crates – where would the history of gaming be without them? Comic Book Guy alerts you each time you uncover a new one.

SAVING AND LOADING

The Simpsons™ Game automatically saves your progress to the Xbox 360 Hard Drive or an Xbox 360 Memory Unit every time you pass a checkpoint, gain a collectible or earn an achievement. When you boot up the game you can either load a previously saved game or select an empty save slot to start a new game profile.

When you load your game later, you must re-start at the last checkpoint, but you keep all collectibles gathered up to your most recent save point.



OTHER GAME MODES

TWO-PLAYER

Call over a friend and take on all the game episodes together in two-player mode. You can only play the episodes as the designated family members. If you try to start Mob Rules as Bart, for instance, the game asks you to switch to Lisa or Marge.

Note: Two-player gameplay is only available in game episodes and some Time Challenges. It is not available in the Land of Chocolate tutorial episode, the Springfield hub or certain Time Challenges.

TIME CHALLENGES

Time Challenges are exciting mini-games you can tackle on your own or with a friend. After you complete an episode, you can choose REPLAY EPISODE from the main menu and then choose that episode's Time Challenge. Finish the Land of Chocolate episode, for example, to unlock a Time Challenge in which you must destroy all the evil chocolate bunnies before time runs out.

When you beat a Time Challenge, your time posts to the leaderboards the next time you access them online.



XBOX LIVE

Play anyone and everyone, anytime, anywhere on Xbox LIVE®. Build your profile (your gamer card). Chat with your friends. Download content at Xbox LIVE Marketplace. Send and receive voice and video messages. Get connected and join the revolution.

Connecting

Before you can use Xbox LIVE, connect your Xbox console to a high-speed Internet connection and sign up to become an Xbox LIVE member. For more information about connecting, and to determine whether Xbox LIVE is available in your region, go to www.xbox.com/live.

FAMILY SETTINGS

These easy and flexible tools enable parents and caregivers to decide which games young game players can access based on the content rating. For more information, go to www.xbox.com/familysettings.

REGISTRATION REQUIRED TO ACCESS ONLINE FEATURES. EA TERMS & CONDITIONS AND FEATURE UPDATES ARE FOUND AT www.ea.com. YOU MUST BE 13+ TO REGISTER WITH EA ONLINE.

EA MAY RETIRE ONLINE FEATURES AFTER 30 DAYS NOTICE POSTED ON www.ea.com.

Xbox LIVE Features

Log in to Xbox LIVE to view your Time Challenge times on the leaderboards and see how you measure up against other *The Simpsons™ Game* players around the world. You can also earn Xbox LIVE achievements by finding all of each type of collectible, completing Time Challenges and more.



Warranty

Limited Warranty

Electronic Arts warrants to the original purchaser of this computer software product that the recording media on which the software programs are recorded will be free from defects in materials and workmanship for 90 days from the date of purchase. During such period defective media will be replaced if the original product is returned to Electronic Arts at the below address, together with a dated proof of purchase, a statement describing the defects, the faulty media and your return address. This warranty is in addition to, and does not affect your statutory rights in any way. This warranty does not apply to the software program themselves, which are provided "as is", nor does it apply to media which has been subject to misuse, damage or excessive wear.

Returns After Warranty

Electronic Arts will replace user-damaged media, current stocks allowing, if the original media is returned with a Eurocheque or postal order for £10 per disc, payable to Electronic Arts Ltd. If you have any queries on warranty replacements or user-damaged discs or manuals, please e-mail us on uk-warranty@ea.com. Please note that this is only for warranty and NOT technical queries. Please remember to include full details of the defect, your name, address and, where possible, a daytime telephone number where we can contact you.

Electronic Arts Customer Warranty, PO Box 181, Chertsey, KT16 0YL, United Kingdom.

CUSTOMER SUPPORT – Here to help you!

Problem? Question? If you are having problems with your game, we are here to help.

AUSTRALIA

Electronic Arts Australia Support Hotline:
1902 261 600*

*Sirius calls charged at \$2.48 per minute, GST inc.
Calls from Mobile & Public phones higher (If you are under 18 years of age parental consent is required).
Operating hours from 9am - 6pm Monday to Friday, as well as pre-recorded information 24 hours a day.

Customer Service Address:

Electronic Arts
PO Box 432
Southport QLD
4215, Australia

Online Customer Support:

<http://eatech.custhelp.com/>

SOUTH AFRICA

Game Smith: (011) 740-0615/6, (083) 918-0083
Electronic Arts South Africa
PO Box 3180
Rivonia
2128

NEW ZEALAND

Electronic Arts New Zealand, Games Hotline: **0900 58885*** (If you are under 18 years of age parental consent required).

*Calls charged at \$1.99 per minute inc GST 7 days a week 9am - 8pm.
Calls from Mobile & Public phones are higher.

Customer Service Address:

Electronic Arts New Zealand
PO Box 47596
Ponsonby
New Zealand

Email Customer Support:

nzsupport@ea.com

KEEP UP WITH THE LATEST EA NEWS..!

If you want to keep up with all the latest news, downloads and coolest updates from EA then all you have to do is register as an EA Member. It's easy! Register now on

www.electronicarts.com.au

As an EA Member you will be kept in the 'know' as to what is new and hot from EA Australia, delivered directly to your inbox.



THIS GAME CONTAINS PARODIES OF THIRD PARTY TRADEMARKS, GAMES, CHARACTERS AND OTHER MATERIAL. THIS GAME IS NOT AUTHORIZED OR APPROVED BY THE OWNERS OF THAT CONTENT, AND THERE IS NO AFFILIATION OR ASSOCIATION BETWEEN THE SIMPSONS GAME, ELECTRONIC ARTS INC. AND ITS LICENSORS WITH THOSE THIRD PARTIES.

Game software © 2007 Electronic Arts Inc. EA and the EA logo are trademarks or registered trademarks of Electronic Arts Inc. in the U.S. and/or other countries. All Rights Reserved. © 2007 Twentieth Century Fox Film Corporation. All Rights Reserved. TWENTIETH CENTURY FOX, FOX, THE SIMPSONS, THE SIMPSONS characters, associated logos and wordmarks are trademarks of Twentieth Century Fox Film Corporation and its related entities.

RenderWare is a trademark or registered trademark of Criterion Software Ltd. Portions of this software are Copyright 1998-2007 Criterion Software Ltd. and its Licensors. All other trademarks are the property of their respective owners.

EAJ07605832MT



Microsoft, Xbox, Xbox 360, Xbox LIVE and the Xbox logos are trademarks of the Microsoft group of companies.

EAJ07605832M